

PT550

TECHNICAL SPECIFICATIONS.

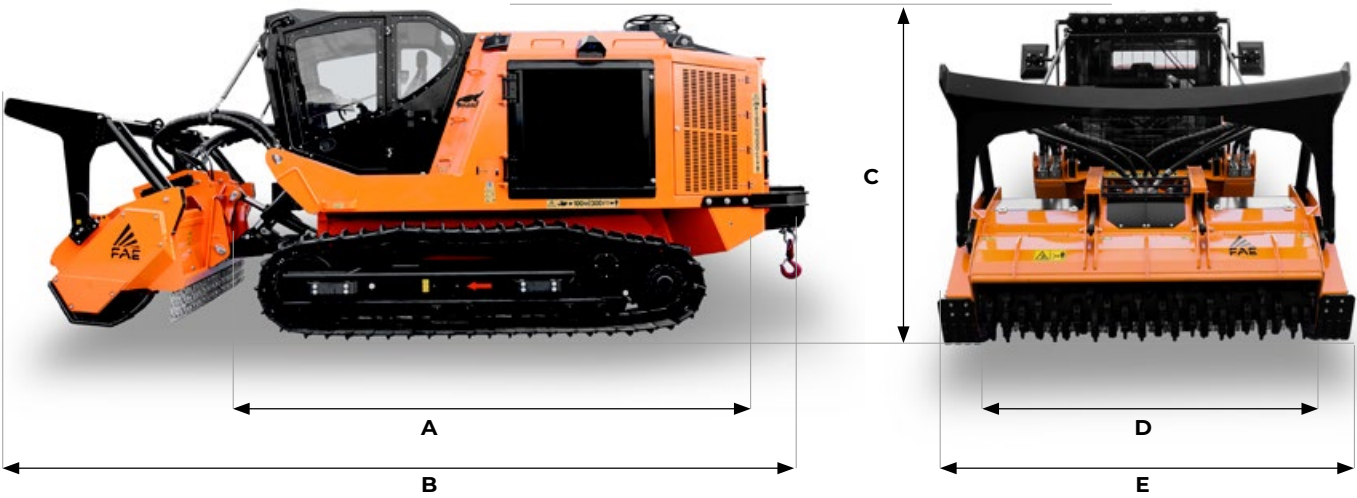


536 hp | Tier 4 Final / Stage V

STANDARD EQUIPMENT

DOC/DPF/SCR after-treatment system	Comfort driver's seat (heated and air suspended)
Heated and refrigerated compartment with cup holders	Ergonomic joysticks
CAT C13 B Acert turbocharged and after-cooled engine	Heating and air conditioning system
Hydrostatic transmission	12-mm Lexan cabin windshields
Hydrostatic transmission attachments	Cabin dust filtration
Fixed H frame with pins	10" touch screen LCD display
Oscillating undercarriage	Multimedia - Bluetooth radio
24 in single-grouser steel pads, lubricated chain, dozer-roller version	LED working lights
Aluminum engine cooler with anti-clogging fins	Air compressor system
Aluminum hydraulic oil cooler with anti-clogging fins	Air shutoff valve
Cat. 2 ROPS/FOPS/OPS certified pressurized cabin	Sonic System

DIMENSIONS



A Overall lenght without attachment
B Transport lenght with 300/U/PT attachment on ground and winch

227 in
319 in

C Max height
D Overall track width

130 in
100 in (24 in pads)
109 in (32 in pads)

E See attachements table

PT550 Tier 4 Final / Stage V

Engine Gross Power	536 hp
Engine Emission	U.S. EPA Tier 4 Final / EU Stage V
Travel Pumps	2 - EP control - 100 cc - Danfoss
Travel Motors	2 - HY control - 160 cc - Danfoss
Max Travel Pressure	6090 psi
Attachment Pump	2 - EP control - 147 cc - Danfoss
Max Mulcher Pressure	5075 psi
Hydraulic Oil Tank Capacity	127 gal
Fuel Tank Capacity	190 gal
DEF AdBlue® Tank	18 gal
Track Chain	190 mm pitch - Lubricated - Berco (std equipment with 24 in pads)
Lower Rollers	6 + 6 Single Flange + 3 + 3 Double Flange
Carrier Rollers	3 + 3
Voltage	24 volt
Max Forward Speed	3.7 mph
Max Reverse Speed	3.7 mph
Gradeability	Vertical continuous 35° (intermittent 45°), Lateral continuous 32°
Operating Weight	44533 lbs (std equipment with 24 in pads) 45768 lbs (std equipment with 32 in pads)
Ground Pressure	5.8 psi (std equipment / 36 in pads / 300/U/SONIC/PT550-250)

ATTACHMENT

MODEL	300/U/SONIC/PT550-250	500/U/SONIC/PT550-225	500/U/SONIC/PT550-250
Head type	Mulcher	Mulcher	Mulcher
Working width (in)	100	91	101
Total width (in)	119	113	122
Weight (lbs)	9138 (C) - 9601 (B)	10384 (C) - 10417 (A)	11464 (C) - 10935 (A)
Rotor diameter (in)	23.2	27	27
Max shredding diameter (in)	16	20	20
No. teeth type A/3+MH/3	-	88+2	96+2
type B/3 + C/3/SS	92+2	-	-
type C/3+C/3/SS	56+2	54+2	60+2

MODEL

	SFH/PT550-225	SFH/PT550-250
Head type	Multitask	Multitask
Working width (in)	91	101
Total width (in)	107	116
Weight (lbs)	12346	13007
Rotor diameter (in)	35	35
Max working depth (in)	16	16
Max shredding diameter stones (in)	14	14
trees (in)	18	18
stump (in)	22	22
No. teeth type G/3 - STC/FP - STC/3/FP	60+4+6	66+4+6

TEETH

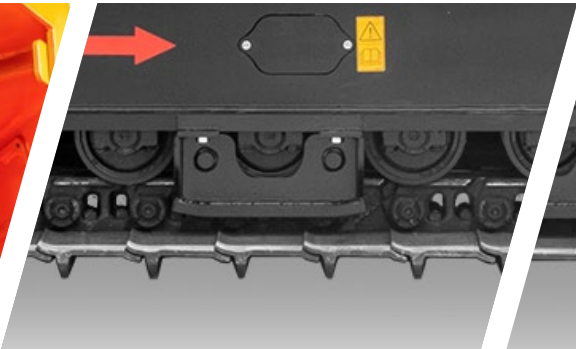
300/U/PT				500/U/PT			SFH/PT
ROTOR C	ROTOR G	ROTOR STONES	ROTOR B	ROTOR C	ROTOR STONES	ROTOR A	ROTOR G
C/3 (standard)	G/3 (standard)	STC/3 (standard)	B/3 (standard)	C/3 (standard)	STC/3 (standard)	A/3 (standard)	G/3 (standard)
C/3/HD (option)	G/3 HD (option)	STC/3/HD (opt)	B/3 HD (option)	C/3 HD (option)	STC/3/HD (option)	A/3 HD (standard)	G/3 HD (option)
K/3 (option)		STC/3/FP (option)		K/3 (option)	STC/3/FP(option)		
STCL/3 (option)				STCL/3 (option)			
C/3/SS (side scraper)	STC/3/HD (side scraper)	STC/3/FP (side scraper)	C/3/SS (side scraper)	C/3/SS (side scraper)	STC/3/FP (side scraper)	MH/3 (side scraper)	STC/3/FP - STC/FP (side scraper)

OPTIONS

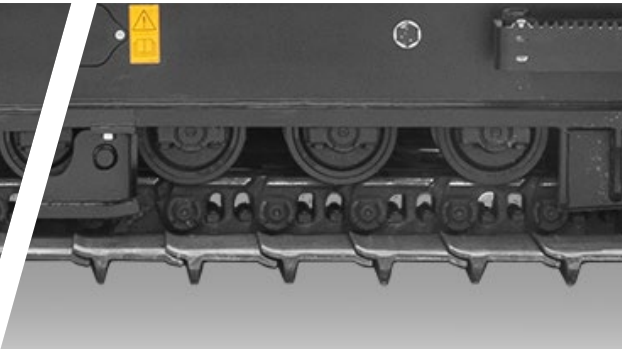
OPTIONS	
Rear winch with 13-t traction force	Chain guide
Front cabin grille	Roller and drive wheel stone guard
Visibility Package (LED headlights + 360° cameras)	Reversible and proportional radiator fans
Air window cleaning system	Filtration with heavy-duty ejector
Pre-heating system	Bio-oil
Additional LED headlights	Custom color
31.8 in single-rib steel slides	Active Power Management system (Load Control and Floating System)
Easy Service package (oil filling pump and service lights)	



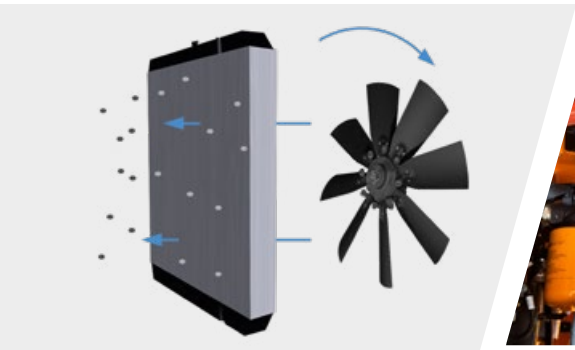
Easy Service package (oil filling pump)



Chain guide



Roller and drive wheel stone guard



Proportional and reversible fan system with hydraulic control



Filtration with heavy-duty ejector



Pre-heating system



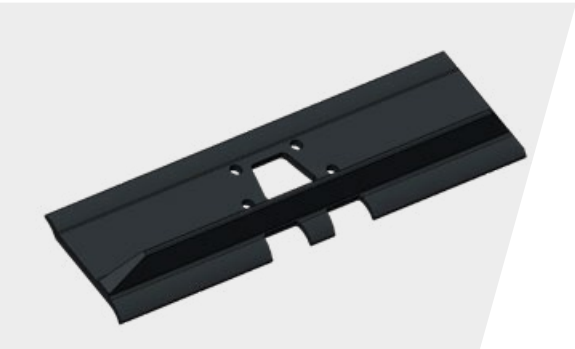
Rear winch with 13-t traction force



Front cabin grille



Air window cleaning system



31.8-in single-grouser steel pads



Visibility Package (360° cameras)



Visibility Package (LED headlights)



Easy Service package (service light)