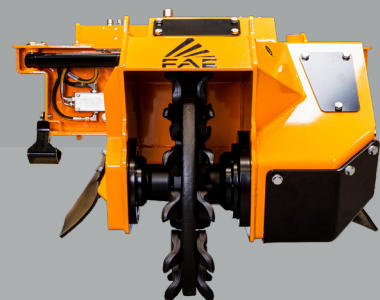
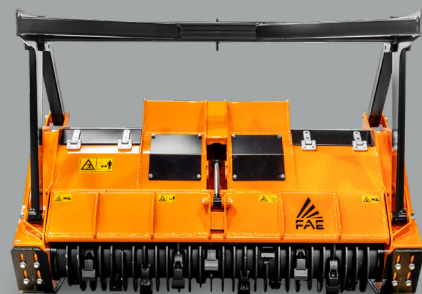


# REMOTE CONTROLLED PRODUCTIVITY

## BL2/RCU75

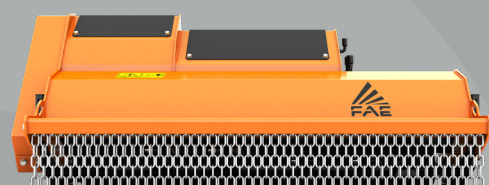
Forestry mulcher with Bite Limiter technology  
High productivity and durability are key features of the BL2/RCU75 forestry mulcher with Bite Limiter rotor, which can mulch vegetation up to 6 inch in diameter.



## SCL/RCU75

Stump cutters for the RCU75 remote controlled tracked carrier

The SCL/RCU75 can shred large stumps and roots up to 20 inches deep. Lateral oscillation with proportional hydraulic control makes it possible to work on a large area without moving the vehicle.



## PMM/RCU75

Flail mulcher with swinging hammer rotor for RCU75.  
The PMM/RCU75 is a high-efficiency forestry mulcher for vegetation and small shrubs up to 3.1 inches in diameter.

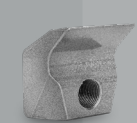
MODEL	BL2/RCU75-150	BL2/RCU75-175	SCL/RCU75	PMM/RCU75-175
Head type	Mulcher	Mulcher	Stump cutter	Mulcher
Working width (in)	58	68	37	70
Total width (in)	70	79	44	77
Weight (lbs)	1852	2050	838	1323
Rotor diameter (in)	14,6	14,6	26	17,3
Disc rotor width (in)	-	-	4,4	-
Max shredding diameter (in)	6	6	16	3,1
Max working depth (in)	6	6	20	-
No. blades type BL/MINI	28	32	-	-
No. teeth type C/3/MINI	28	32	-	-
No. teeth type L/1+L/2	-	-	15+15	-
No. hammers type PMM	-	-	-	22
No. flails type Y/3	-	-	-	22

Data refers to machine as standard set-up. Options may have reflects on weights and dimensions. The technical data in this catalogue may be altered without prior notice.

### ROTOR TYPE BL2/RCU75

### ROTOR TYPE SCL/RCU75

### ROTOR TYPE PMM/RCU75



BLADE BL/MINI (standard)



TOOTH C/3/MINI (option)



TOOTH L/1 (standard)



TOOTH L/2 (standard)



HAMMER PMM (standard)



FLAIL Y/3 (option)

## 01 Powerful

4 cyl. Turbo Aftercooler 74-hp engine.

## 02 Robust

Structural steel frame.  
Integrated and protected components.

## 03 Agile

Works on sloping terrain up to 55°.  
Full counter-rotating.

## 04 Bite Limiter

Available on the BL2/RCU75 forestry mulcher with Bite Limiter technology.

## 05 High-tech

Integrated system of electronic control units and sensors for maximum performance at all times.

## 06 Professional

The result of FAE's experience designing PT and Demining tracked carriers.



LAND CLEARING  
**RCU75**



fae-group.com

REMOTE CONTROLLED TRACKED CARRIERS

USA

# RCU75

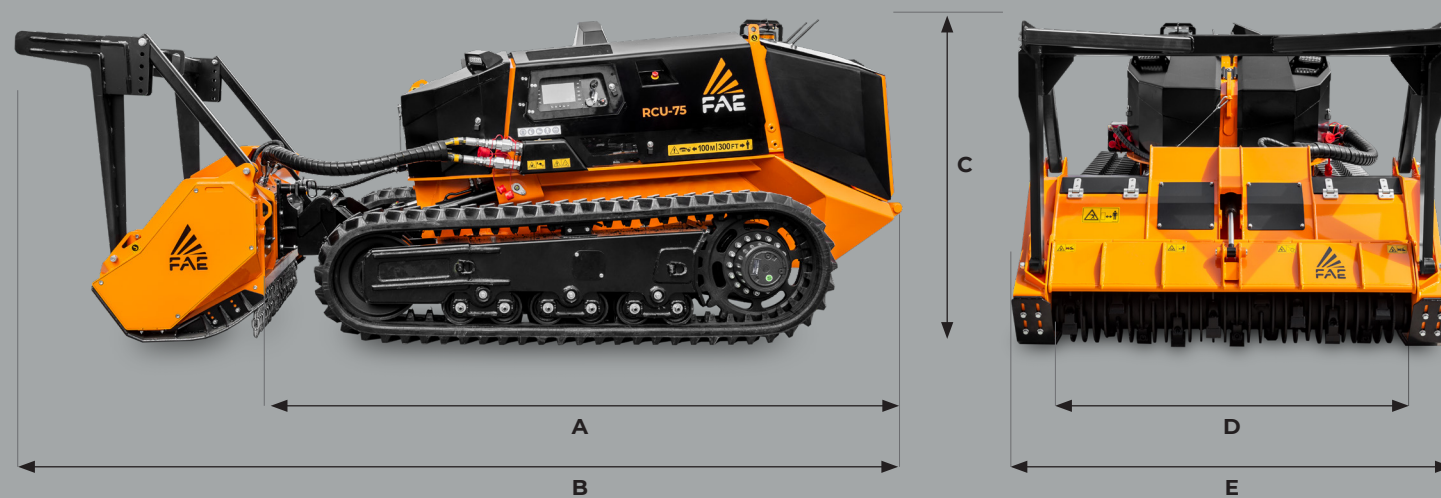
Working in hard-to-reach areas or steeply sloping terrain requires special equipment that ensures user safety and operating efficiency. The RCU75 is a compact and powerful, remote controlled tracked carrier that is the result of merging FAE's extensive experience in designing tracked carriers for the PT series and remote-control systems for the vehicles in our Demining line. The RCU75 is designed for green area's maintenance work both in the forestry and road sectors. Its versatility makes it well suited for working in hilly and wooded areas, near railroad tracks, power lines, gas and oil pipelines, gardens, and near roads, highways, canals, rivers and lakes.



## APPLICATIONS:

- Forestry maintenance
- Plantation and crop maintenance
- Canals, rivers, ponds overgrowth cleanup
- Power lines, oil & gas, R.O.W. maintenance
- Roadside and railway vegetation maintenance

## DIMENSION



**A** Overall length without attachment 112 in  
**B** Transport length with BL2/RCU75 attachment on ground 160 in

**C** Max height 61 in  
**D** Overall track width 67 - 83 in  
**E** See attachments table

## COMPACT, REMOTE CONTROLLED TRACKED CARRIER FOR FORESTRY, AGRICULTURAL AND MUNICIPAL WORK

# RCU75

The RCU75 is a compact, powerful FAE tracked carrier that shreds branches and wood pieces, grass, and small shrubs. It can also cut stumps when outfitted with an SCL/RCU75 head. It is equipped with a 74-hp Kohler engine. The RCU75 can work on steep slopes up to 55°. The heavy-duty undercarriage features a hydraulic variable track system with independent undercarriage frames for maximum stability on steep

terrain. The high-profile rubber or steel tracks combined with the undercarriage's multiple roller system provide unbeatable traction. The dual hydrostatic transmission makes it easier to manage traction and the attachment.

### EFFICIENT AND RELIABLE TRANSMISSION

Electronically controlled piston pumps combined with a dedicated electronic control unit provide an integrated technological system. The result is high performance and long-term reliability, as well as simple and intuitive operation.



### HEAVY DUTY UNDERCARRIAGE

Hydraulic variable track system with independent undercarriage frames and an automatic tensioning system built to work in the toughest conditions, thanks to a rubber tracks structure, roller system and idlers.



**STEEL TRACKS**  
(option)

### STANDARD EQUIPMENT

Engine KOHLER KDI 2504 turbocharged and after-cooled	High-profile rubber tracks and roller system
After-treatment system DOC (RCU75 TIER 4F)	Combined aluminum cooler anti-clogging fins style
Hydrostatic tracks transmission	Proportional and reversible fan system with hydraulic control
Hydrostatic attachments transmission	Ergonomic joysticks controls
Auxiliary open loop attachments transmission	LCD color 4.3" display on remote control unit
Load Control function	Double remote-control batteries and on board battery charger
Tilting attachment plate with quick coupling	LCD color 7" display on board
Independent hydraulic variable track gauge system	LED working light
Floating function	

### OPTIONS

Rear recovery winch with 2 t pulling power	Undercarriage with steel tracks
Bio-oil	



74 hp

### PROFESSIONAL REMOTE CONTROL

The ergonomic remote control with a large 4.3" display makes it easy to manage all vehicle and attachment functions. Customizable function keys. 2.4 GHz transmission frequency.



### SELF-CLEANING RADIATOR

The aluminum radiator combined with anti-clogging fins is paired with a proportional and reversible fan to keep the radiator clean and efficient at all times, consistently maintaining peak performance and reducing the need for upkeep.

TECHNICAL DATA		TIER 4 FINAL
<b>Engine Gross Power</b>		74 hp
<b>Engine Emission</b>		U.S. EPA Tier 4 Final - EU Stage V
<b>Closed Loop</b>		Max Flow 27,7 gpm - Max Pressure 4650 psi
<b>Open Loop</b>	<b>AUX 1</b>	Max Flow 4 gpm - Max Pressure 3045 psi
	<b>AUX 2</b>	Max Flow 4 gpm - Max Pressure 3045 psi
	<b>AUX 3</b>	Max Flow 10,5 gpm - Max Pressure 3045 psi
<b>Lifting capacity</b>		Max 2095 lbs @ center of gravity position: Height 15,7 in from the ground level / Length 15,7 in from the attachment plate / Width on RCU central axis
<b>Hydraulic Oil Tank Capacity</b>		12 gal
<b>Fuel Tank Capacity</b>		17 gal
<b>Rubber Track</b>		86 Pitch - 13 in width - High profile
<b>Lower Rollers</b>		6 + 6 HD style - Double flange
<b>Front Idler / Tensioning Group</b>		Double flange - Automatic tensioning system
<b>Voltage</b>		12 volt
<b>Max forward speed</b>		4,7 mph
<b>Max reverse speed</b>		4,7 mph
<b>Gradeability</b>		55° - All directions
<b>Operating weight</b>		7650 lbs (std equipment, std rubber track)
<b>Ground Pressure</b>		4,98 psi (std equipment / std rubber track / BL2/RCU75-150)

Data refers to machine as standard set-up. Options may have reflects on weights and dimensions. The technical data in this catalogue may be altered without prior notice.