

REMOTE CONTROLLED PRODUCTIVITY

BL2/RCU



Forestry mulcher with Bite Limiter technology

PMM/RCU



Mulcher with hammer/flail rotor for RCU75

SCL/RCU



Stump cutter for the RCU75 remote controlled tracked carrier

RPL/SSL



Fixed tooth road planer for the RCU75 remote controlled tracked carrier

SAE ATTACHMENT PLATE



Allows compatibility with third-party skid steers equipment such as: chippers, sprayers, forestry winches, sweepers, mixing buckets, lifting forks, dozing blades, disc trimmers, trenchers and more

MODEL	BL2/RCU75-150	PMM/RCU75-175	SCL/RCU75	RPL/SSL-45
Head type	Mulcher	Mulcher with hammer/flail rotor	Stump cutter	Road planer
Working width (mm)	1480	1780	950	450
Total width (mm)	1776	1966	1120	1650
Weight (Kg)	840	720	420	900
Rotor diameter (mm)	370	440	660	600
Disc rotor width (mm)	-	-	112	-
Max shredding diameter (mm)	150	80	400	-
Max working depth (mm)	-	-	500	170
Tilting angle ±	-	-	-	8°
Side shifting (mm)	-	-	-	560
No. blades type BL/MINI	28	-	-	-
No. teeth type L/1+L/2	-	-	15+15	-
No. hammers type PMM	-	22	-	-
No. picks type R	-	-	-	48

Data refers to machine as standard set-up. Options may have reflects on weights and dimensions. The technical data in this catalogue may be altered without prior notice.

ROTOR TYPE BL



BLADE BL/MINI (standard)



TOOTH C/3/MINI (option)

ROTOR TYPE SCL



TOOTH L/1 (standard)



TOOTH L/2 (standard)

ROTOR TYPE PMM

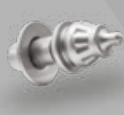


HAMMER PMM (standard)



FLAIL Y/3 (option)

ROTOR TYPE R



PICK R/44/A (standard)



PICK R/44/C (option)

01 Powerful

4 cyl. Turbo Aftercooler 74-hp engine.

02 Robust

Structural steel frame.
Integrated and protected components.

03 Agile

Works on sloping terrain up to 55°.
Full counter-rotating.

04 Multitask

Compatible with FAE and third-party equipment with SAE attachment plate.

05 High-tech

Integrated system of electronic control units and sensors for maximum performance at all times.

06 Professional

The result of FAE’s experience designing PT and Demining tracked carriers.



LAND CLEARING
RCU75



RCU75

Working in hard-to-reach areas or steeply sloping terrain requires special equipment that ensures user safety and operating efficiency. The RCU75 is a compact and powerfull, remote controlled tracked carrier that is the result of merging FAE's extensive experience in designing tracked carriers for the PT series and remote-control systems for the vehicles in our Demining line. The RCU75 is designed for green area's maintenance work both in the forestry and road sectors. Its versatility makes it well suited for working in hilly and wooded areas, near railroad tracks, power lines, gas and oil pipelines, gardens, and near roads, highways, canals, rivers and lakes.

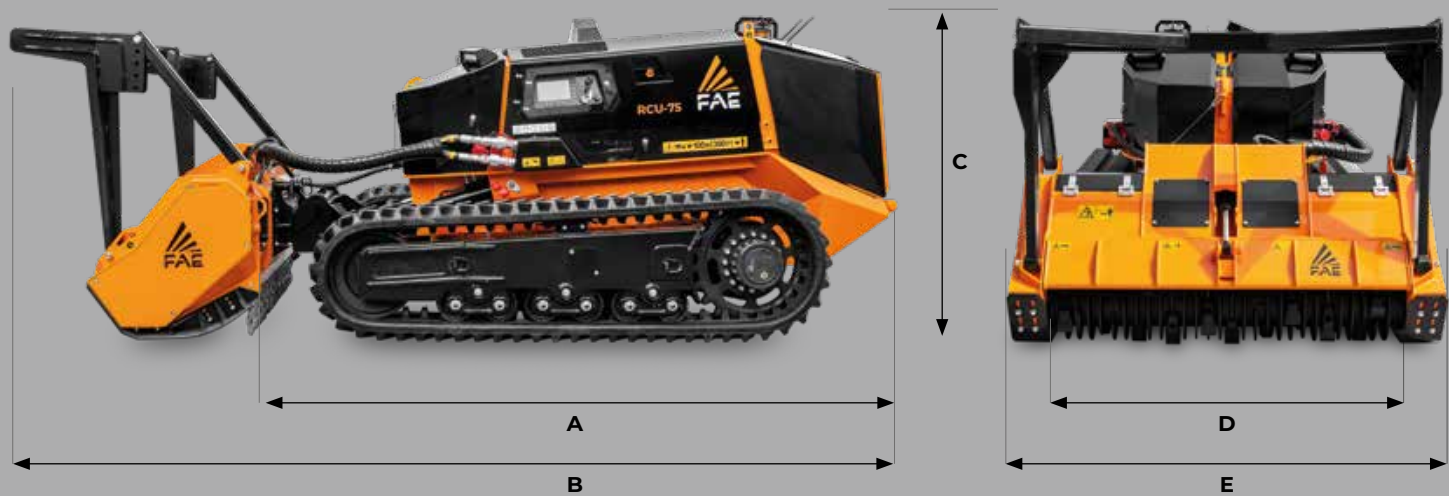


APPLICATIONS:

- Forestry maintenance
- Plantation and crop maintenance
- Canals, rivers, ponds overgrowth cleanup
- Power lines, oil & gas, R.O.W. maintenance
- Roadside and railway vegetation maintenance
- Asphalt milling
- Asphalt recycling

SAE attachment plate increases the variety of applications by expanding the number of compatible attachments

DIMENSION



- A Overall lenght without attachment

2996 mm
- B Transport lenght with BL2/RCU attachment on ground

4050 mm
- C Max height

1560 mm
- D Overall track width

1700 - 2100 mm
- E See attachements table

COMPACT, REMOTE CONTROLLED TRACKED CARRIER FOR FORESTRY, AGRICULTURAL AND MUNICIPAL WORK

RCU75

The RCU75 is FAE's compact, powerful tracked carrier capable of shredding branches, wood, grass and small shrubs, cutting stumps, or shredding asphalt using various FAE attachments. With the introduction of the SAE universal attachment plate, it can also be fitted with a wide range of third-party equipment for skid steers. The RCU75 relies on a 74 hp Rehlko (Kohler) engine. It can work on steep slopes up to 55°, with a heavy-

duty undercarriage that features a hydraulic variable track system for maximum stability on steep terrain. The high-profile rubber or steel tracks, combined with the undercarriage's multiple-roller system, provide unbeatable traction. Finally, the dual hydrostatic transmission makes it easier to manage both traction and the attachment.

FAE APP

With the FAE App, you can use your smartphone to monitor primary operating parameters in real time, check any malfunctions, manage scheduled maintenance and, now, move the vehicle if remote-control signal is lost.



EFFICIENT AND RELIABLE TRANSMISSION

Electronically controlled piston pumps combined with a dedicated electronic control unit provide an integrated technological system. The result is high performance and long-term reliability, as well as simple and intuitive operation.



STEEL TRACKS (option)

HEAVY DUTY UNDERCARRIAGE

Hydraulic variable track system with independent undercarriage frames and an automatic tensioning system built to work in the toughest conditions, thanks to a rubber tracks structure, multiple roller system and idlers.

STANDARD EQUIPMENT

REHLKO (KOHLER) KDI 2504 turbocharged and after-cooled engine	High-profile rubber tracks and roller system
DOC after-treatment system (RCU75 - Tier 4F) DOC/DPF after-treatment system (RCU75 - Stage V)	Combined aluminum cooler with anti-clogging fins
Hydrostatic tracks transmission	Proportional and reversible fan system with hydraulic control
Hydrostatic attachments transmission	Ergonomic joysticks
Auxiliary hydraulic circuit for attachments	4.3" LCD color display on remote control unit
Load Control System	Double remote control battery and on-board battery charger
SAE attachment plate	7" LCD on-board color display
Independent hydraulic variable track gauge system	LED working lights
Floating System	

OPTIONS

Rear winch with 2-t traction force	Undercarriage with steel tracks
Bio-oil	Rear winch PLUS with 2-t traction force



74 hp

PROFESSIONAL REMOTE CONTROL

The ergonomic remote control with a large 4.3" display makes it easy to manage all vehicle and attachment functions. Customizable function keys. 2.4 GHz transmission frequency.



SELF-CLEANING RADIATOR

The aluminum radiator combined with anti-clogging fins is paired with a proportional and reversible fan to keep the radiator clean and efficient at all times, consistently maintaining peak performance and reducing the need for upkeep.



TECHNICAL DATA		RCU75 - Tier 4F / RCU75 - Stage V
Engine Gross Power		74 hp
Engine Emission		U.S. EPA Tier 4 Final - EU Stage V
Closed Loop		Max Flow 105 L/min - Max Pressure 320 bar
	AUX 1	Max Flow 15 L/min - Max Pressure 210 bar
	AUX 2	Max Flow 15 L/min - Max Pressure 210 bar
	AUX 3	Max Flow 40 L/min - Max Pressure 210 bar
Open Loop		
Lifting Capacity		Max 950 Kg @ center of gravity position: Height 400 mm from the ground level / Length 400 mm from the attachment plate / Width on RCU central axis
Hydraulic Oil Tank Capacity		46 L
Fuel Tank Capacity		63 L
Rubber Track		86 mm Pitch - 320 mm width - High profile
Lower Rollers		6 + 6 HD style - Double flange
Front Idler / Tensioning Group		Double flange - Automatic tensioning system
Voltage		12 volt
Max Forward Speed		7,5 Km/h
Max Reverse Speed		7,5 Km/h
Gradeability		55° - All directions
Operating Weight		3380 Kg (std equipment, 320 mm rubber tracks)
Ground Pressure		0,35 Kg/cm2 (std equipment / 320 mm rubber tracks / BL2/RCU75-150)

Data refers to machine as standard set-up. Options may have reflects on weights and dimensions. The technical data in this catalogue may be altered without prior notice.