

PT-175

TECHNICAL SPECIFICATIONS.

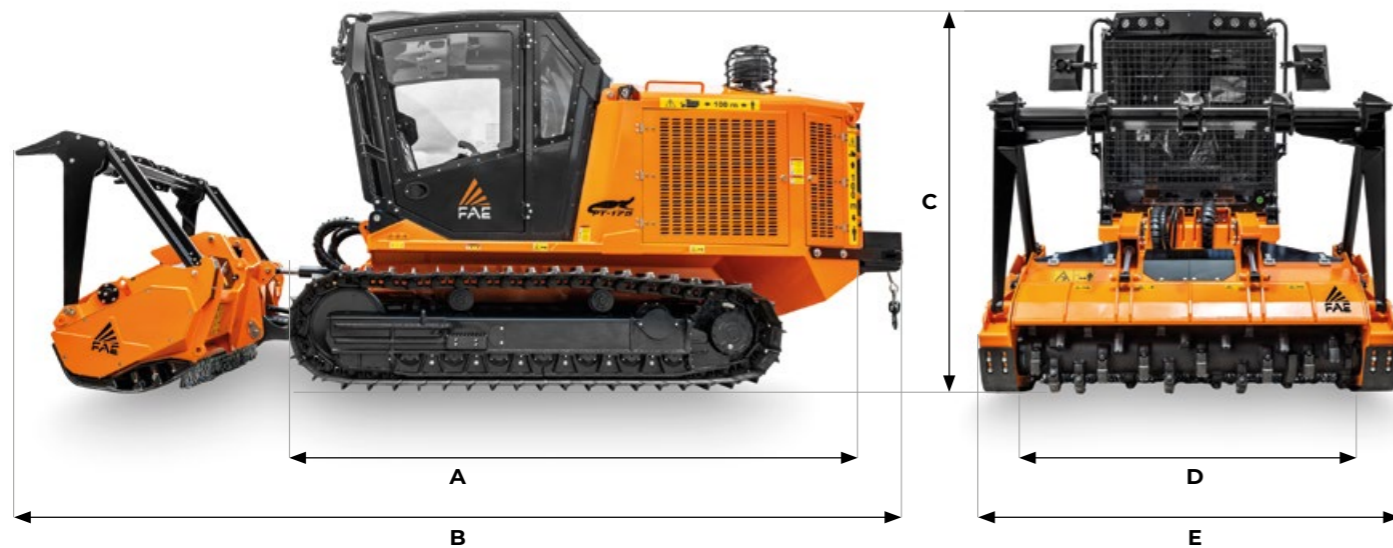


173 hp | TIER 4 FINAL / STAGE V

STANDARD EQUIPMENT

After-treatment system DOC/DPF/SCR	Comfort driver's seat (heated and air suspended)
Engine CAT C4.4 Acert turbocharged and after-cooled	Ergonomic joysticks controls
Hydrostatic tracks transmission	Heating & Air conditioning systems
Hydrostatic attachments transmission	Double emergency exit and roof escape external access handle
Basic Load Control function	Lexan® cabin windshields (full equipped 12 mm)
H-frame with oscillating pin attach system	Cabin air filtration dust proofing
Oscillating undercarriage	LCD color 7" display
Track chains lubricated, dozer-style rollers	MP3/CD bluetooth radio player
Combined aluminum cooler anti-clogging fins style	LED working lights
Cabin ROPS/FOPS/OPS-approved	Sonic System

DIMENSIONS



A Overall length without attachment	4518 mm	C Max height	2654 mm
B Transport length with 140/U/SONIC attachment on ground and winch	6422 mm	D Overall track width	2050 mm (with 500 mm pads)
		E See attachments table	

PT-175 T4F

Engine Gross Power	173 hp
Engine Emission	U.S. EPA Tier 4 Final / EU Stage V
Travel Pumps	2 - EP control - 60 cc - Danfoss
Travel Motors	2 - HY control - 60 cc - Rexroth
Max Travel Pressure	420 Bar
Attachment Pump	1 - EP control - 100 cc - Danfoss
Max Mulcher Pressure	350 Bar
Hydraulic Oil Tank Capacity	230 L
Fuel Tank Capacity	250 L
DEF AdBlue® Tank	19 L
Track Chain	155 Pitch - Lubricated - Berco
Lower Rollers	7 + 7 Single Flange
Carrier Rollers	2 + 2
Voltage	24 volt
Max forward speed	7 Km/h
Max reverse speed	7 Km/h
Gradeability	45° vertical, 32° lateral
Operating weight	8589 Kg (std equipment, 500 mm pads) 8905 Kg (std equipment, 700 mm pads)
Ground Pressure	0,28 Kg/cm² (std equipment / 700 mm pads / 140/U-175)

ATTACHMENT

MODEL	140/U/SONIC 175	200/SC
Head type	Mulcher	Stump cutter
Working width (mm)	1827	-
Working width max range (mm)	-	1200
Blade width (mm)	-	1127
Total width (mm)	2171	-
Weight (Kg)	1700	1755
Rotor diameter (mm)	450	-
Disc rotor diameter (mm)	-	815
Disc rotor width (mm)	-	160
Max working depth (mm)	-	500
Max shredding diameter (mm)	250	500
No. teeth type C/3+C/3/SS	38+4	-
type I + C/3/SS	54+2	-
No. teeth type M1+M2+M3+M4	-	12+3+12+3
No. blades type BL + C/3/SS	30+2	-

TEETH

140/U/SONIC 175		200/SC	
ROTOR C	ROTOR I	ROTOR BL	DISC ROTOR
C/3 (standard)	I (option)	BL Blade (option)	M1 (standard)
C/3/HD (option)			M2 (standard)
K/3 (option)			M3 (standard)
BL Blade (option)			M4 (standard)
STCL/3 (option)			
C/3/SS (left/right) (side scraper)	C/3/SS (left/right) (side scraper)	C/3/SS (left/right) (side scraper)	

OPTIONS

OPTIONS

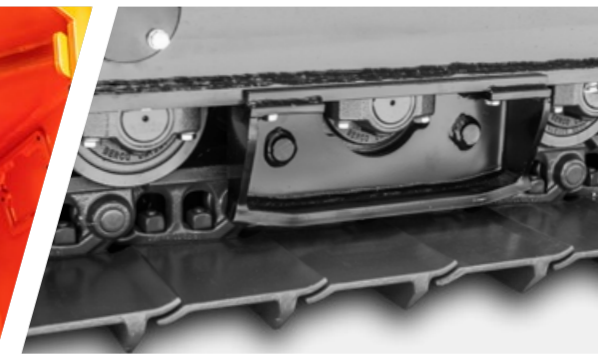
Rear winch - rated towing capacity: 6t	Chain guides
Protective roof	Rock guards
Cabin pressurization system	Proportional and reversible radiator fan
Protective Windshield Grill	Ejector (heavy duty filtration package)
Rear view camera with additional LCD display (visibility package)	Drainage filter (heavy duty filtration package)
Additional lighting package (visibility package)	Pre-heating system for engine and hydraulic oil
Service light (service package)	Air shut-off system
Oil top-off pump (service package)	



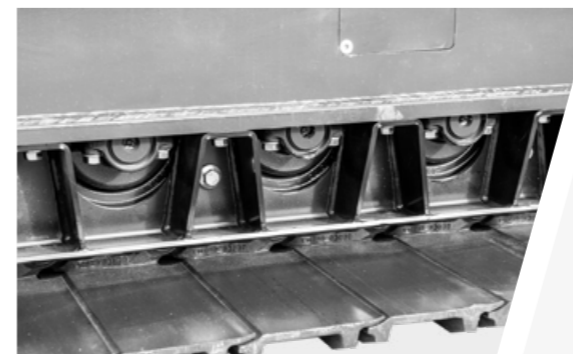
Service light (service package)



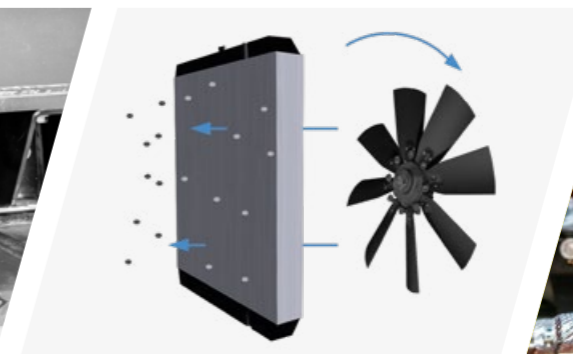
Oil top-off pump (service package)



Chain guides



Rock guards



Proportional and reversible radiator fan



Ejector (heavy duty filtration package)



Rear winch - rated towing capacity: 6t



Canopy



Cabin pressurization system



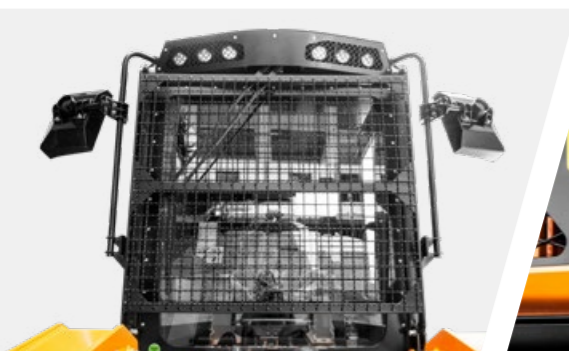
Drainage filter (heavy duty filtration package)



Pre-heating system for engine and hydraulic oil



Air shut-off system



Protective Windshield Grill



Rear view camera with additional LCD display (visibility package)



Additional lighting package (visibility package)