

PT-475

TECHNICAL SPECIFICATIONS.

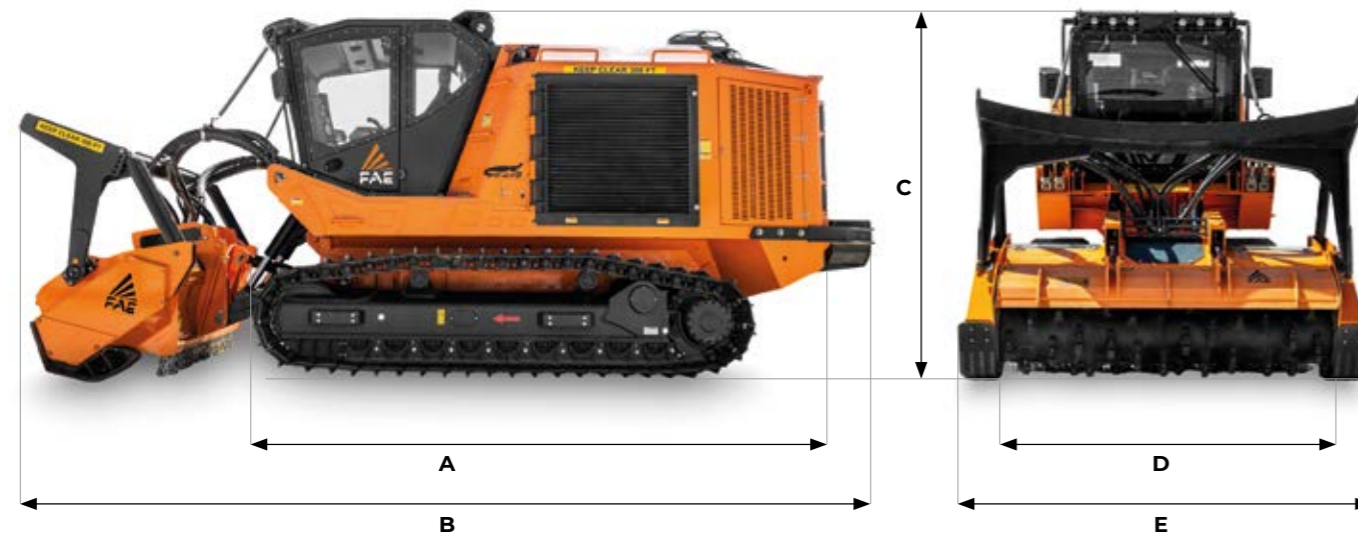


475 hp | TIER 4 FINAL / STAGE V
TIER 3 / STAGE III A

STANDARD EQUIPMENT

After-treatment system DOC/DPF/SCR	Comfort driver's seat (heated and air suspended)
Engine CAT C13 Acert turbocharged and after-cooled	Ergonomic joysticks controls
Hydrostatic tracks transmission	Heating & Air conditioning systems
Hydrostatic attachments transmission	Lexan® cabin windshields (full equipped 12 mm)
H-frame with fixed pin attach system	Cabin air filtration dust proofing
Oscillating undercarriage	LCD color 7" display
Track chains lubricated, dozer-style rollers	MP3/CD bluetooth radio player
Engine aluminum cooler anti-clogging fins style	LED working lights
Hydraulic Oil aluminum cooler anti-clogging fins style	Air compressor system
Cabin ROPS/FOPS/OPS-approved	Air Shut Off Valve

DIMENSIONS



A Overall length without attachment	5860 mm	C Max height	3300 mm
B Transport length with 300(U attachment on ground and winch	8200 mm	D Overall track width	2550 mm (600 mm pads) 2760 mm (810 mm pads)
		E See attachments table	

PT-475 TIER 3 / STAGE III A

PT-475 TIER 4 FINAL / STAGE V

Engine Gross Power	475 hp	475 hp
Engine Emission	U.S. EPA Tier 3 / EU Stage III A	U.S. EPA Tier 4 Final / EU Stage V
Travel Pumps	2 - EP control - 100 cc - Danfoss	2 - EP control - 100 cc - Danfoss
Travel Motors	2 - HY control - 160 cc - Danfoss	2 - HY control - 160 cc - Danfoss
Max Travel Pressure	420 Bar	420 Bar
Attachment Pump	2 - EP control - 130 cc - Danfoss	2 - EP control - 130 cc - Danfoss
Max Mulcher Pressure	350 Bar	350 Bar
Hydraulic Oil Tank Capacity	480 L	480 L
Fuel Tank Capacity	790 L	790 L
DEF AdBlue® Tank	-	35 L
Track Chain	190 Pitch - Lubricated - Berco	190 Pitch - Lubricated - Berco
Lower Rollers	6 + 6 Single Flange + 3 + 3 Double Flange	6 + 6 Single Flange + 3 + 3 Double Flange
Carrier Rollers	2 + 2	2 + 2
Voltage	24 volt	24 volt
Max forward speed	6 Km/h	6 Km/h
Max reverse speed	6 Km/h	6 Km/h
Gradeability	45° vertical, 35° lateral	45° vertical, 35° lateral
Configuration tracks	810 mm pads (single grouser) 900 mm pads (double grouser)	810 mm pads (single grouser) 900 mm pads (double grouser)
Operating weight	19900 Kg (std equipment, 600 mm pads) 20500 Kg (std equipment, 810 mm pads)	20400 Kg (std equipment, 600 mm pads) 21000 Kg (std equipment, 810 mm pads)
Ground Pressure	0,40 Kg/cm² (std equipment / 810 mm pads / 300/U-250)	0,41 Kg/cm² (std equipment / 810 mm pads / 300/U-250)

ATTACHMENT

MODEL	300/U 225	300/U 250	500/U 225	500/U 250
Head type	Mulcher	Mulcher	Mulcher	Mulcher
Working width (mm)	2304	2544	2320	2560
Total width (mm)	2784	3024	2860	3100
Weight (kg)	3900	4100	4710	4960
Hydraulic motor type	2x - VT - 110 cc Danfoss	2x - VT - 110 cc Danfoss	2x - VT - 200 cc Bosch Rexroth	2x - VT - 200 cc Bosch Rexroth
Rotor diameter (mm)	595	595	700	700
Max shredding diameter (mm)	400	400	500	500
No. teeth type A/3+MH	-	-	88+2	96+2
type B/3 + C/3/SS	80+2	92+2	-	-
type C/3+C/3/SS	50+2	56+2	54+2	60+2
type M1+M2+M3+M4	-	-	-	-

MODEL

SFH/PM 225

SFH/PM 250

Head type	Multitask	Multitask
Working width (mm)	2320	2560
Total width (mm)	2710	2950
Weight (kg)	5700	6350
Hydraulic motor type	2x - 200 cc Bosch Rexroth	2x - 200 cc Bosch Rexroth
Rotor diameter (mm)	900	900
Max working depth (mm)	400	400
Max shredding diameter stones (mm)	350	350
trees (mm)	450	450
stump (mm)	550	550
No. teeth type G/3 - STC/3/FP - STC/FP	60+2+8	66+2+8

TEETH

300/U				500/U		SFH/PM	
ROTOR C	ROTOR G	ROTOR STONES	ROTOR B	ROTOR C	ROTOR STONES	ROTOR A	ROTOR G
C/3 (standard)	G/3 (standard)	STC/3 (standard)	B/3 (standard)	C/3 (standard)	STC/3 (standard)	A/3 (standard)	G/3 (standard)
C/3 HD (option)	G/3 HD (option)	STC/3/HD (option)	B/3 HD (option)	C/3 HD (option)	STC/3/HD (option)	A/3 HD (standard)	G/3 HD (option)
K/3 (option)		STC/3/FP (option)		K/3 (option)	STC/3/FP (option)		
C/3/SS (side scraper)	STC/3/HD (side scraper)	STC/3/FP (side scraper)	C/3/SS (side scraper)	C/3/SS (side scraper)	STC/FP (side scraper)	M-H (side scraper)	STC/3/FP - STC/FP (side scraper)

OPTIONS

OPTIONS

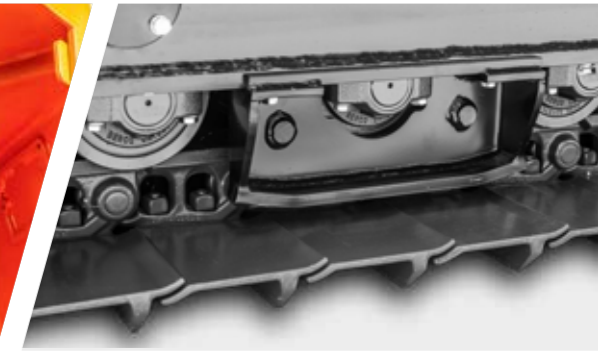
Rear winch - rated towing capacity: 13 t	Chain guides
Cabin pressurization system	Rock guards
Protective windshield grill	Proportional and reversible radiator fan
Air-window cleaning system	Ejector (heavy duty filtration package)
Rear view camera with additional LCD display (visibility package)	Pre-heating system for engine and hydraulic oil
Additional lighting package (visibility package)	Air shut-off system
Service light (visibility package)	Automatic fire suppression system
Oil top-off pump (service package)	Active Power Management Function



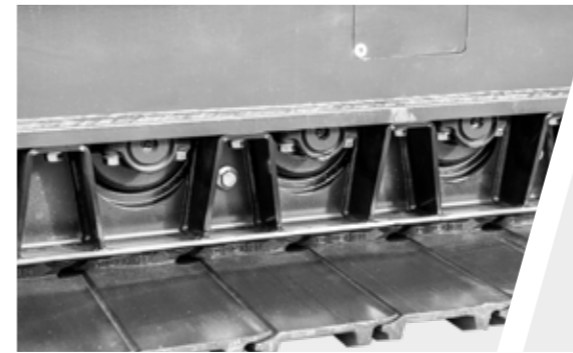
Service light (visibility package)



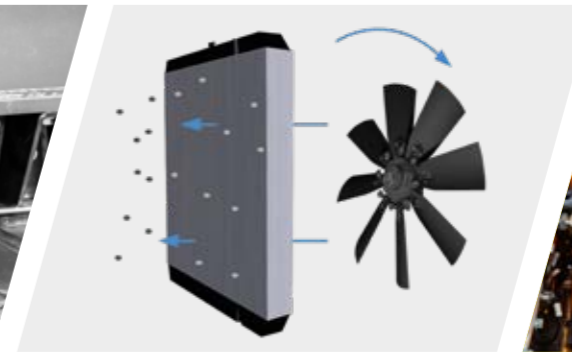
Oil top-off pump (service package)



Chain guides



Rock guards



Proportional and reversible radiator fan



Ejector (heavy duty filtration package)



Rear winch - rated towing capacity: 13t



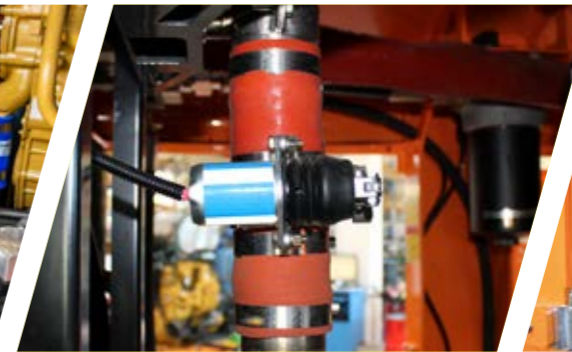
Cabin pressurization system



Protective windshield grill



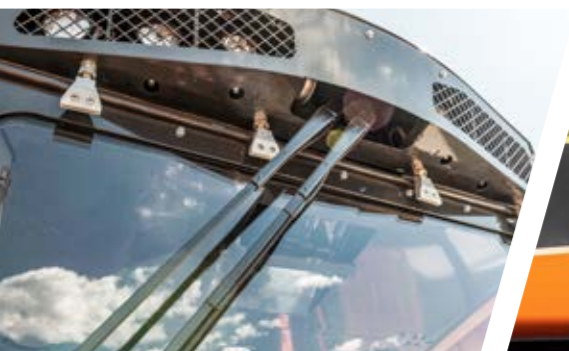
Pre-heating system for engine and hydraulic oil



Air shut-off system



Automatic fire suppression system



Air-window cleaning system



Rear view camera with additional LCD display (visibility package)



Additional lighting package (visibility package)